



No. BT-1 Bending Tool

1 - 19 lbs. 4 oz.
48" long x 15" wide x 9" high.
For use with Models 1300, 1400 & 4200 tracks.
See page 81 for description of use.



No. 1728 Cord

100' - 2 lbs. 4 oz.
Synthetic center and stretch-resistant.
For manually-operated tracks.
1/4" (No. 8)



No. 3529 Cable

100' - 2 lbs. 7 oz.
Wire center with woven polyester cover.
Used with drum-drive machines.
3/16" (No. 6)

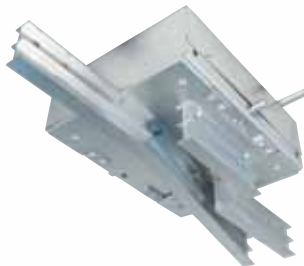
Need a Rotodraper® for a 420 track system?

The Model 14 and 14A Rotodraper® is designed to work on 4200 track as well as 1400 track.



Need a switching device for a 420 Track System?

We offer both motorized and manual 2-way track switches and fan switches with up to a 5 to 1 configuration for the Model 4200 track.



Please see page 77 for more information on these track switches.



No. 1478 (BL) Suspension Strap

1 - 2 oz.
Used with Model 4208 Hanging Clamp (not included) and pipe clamp (also not included) to attach track to parallel overhead pipe batten.
Strap length 4".



No. 1481 (BL) Twist Strap

1 - 2 oz.
Used with Model 4208 hanging clamp (not included) and pipe clamp (also not included) to attach track to perpendicular overhead pipe batten.
Strap length 4"



No. 1478-A (BL) Suspension Strap

1 pr. - 2 oz.
Used to with Model 4208 hanging clamp (not included) to attach track to parallel overhead pipe batten.
Strap length 6" from bottom of pipe.
Model 1478-AL available with 8" strap length.



No. 1481-A (BL) Twist Strap

1 - 2 oz.
Used with Model 4208 hanging clamp (not included) to attach track to perpendicular overhead pipe batten.
Strap length 6" from bottom of pipe.
Model 1481-AL available with 8" strap length.