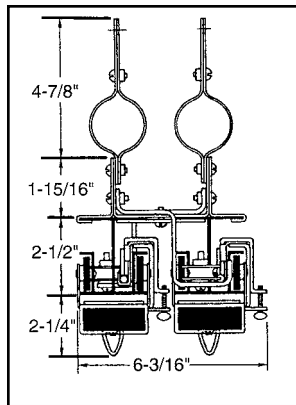




Model 350 Assembly

Cross Section of 350 Track at Center Overlap

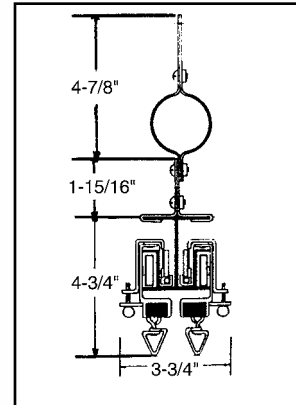
Min. pocket width: 7 in.



Shown with optional pipe clamps.

Cross Section of 340 Track at Center Overlap

Min. pocket width: 4 - 1/2 in.



Shown with optional pipe clamps.

CURVIT-SURE® MODEL 350

Curvit-Sure® 350 is a double-sectioned curved track designed for medium weight curtains on bi-parting lengths of up to 60' (layout dependent). All curves are factory formed with a **minimum radius of 6'** (layout dependent). The operating cord is routed through a trough and idler system and does not come into contact with any carriers except the masters. The broad-sides at each end have 1-1/4" cutaway area to allow for insertion or removal of single carriers. Anti-friction tape and nylon spacers applied at critical areas reduce noise and friction.

Manually operated cord-drawn curved tracks require more pulling effort than straight tracks. Therefore, curved tracks should be motorized whenever possible.

Curvit-Sure® tracks cannot be used in reverse curve applications.

MODEL 350-R

Model 350-R is identical to Model 350 except that No. 3501-A neoprene Ball-Bearing Single Carriers are used in place of the standard No.3501 Single Carriers. Neoprene carriers help reduce the noise of a track system.

MODELS 351 AND 351-R

Model 351 is identical to Model 350 except that it is ENTIRELY STRAIGHT IN LAYOUT. This unit is especially desirable for installations where it is necessary that the cord be concealed within the track channel. Model 351-R is identical to Model 351 except that No. 3501-A neoprene Ball-Bearing Single Carriers are used in place of the standard No.3501 Single Carriers.

MODELS 340 AND 340-R

Model 340 is a single-sectioned track designed for medium weight curtains on bi-parting lengths of up to 50' (layout dependent). The cord is completely concealed in the track channel, and overlapping is accomplished by master and tandem carriers which by-pass on opposite sides of the track. Model 340-R is identical to Model 340 except that it features Model 3501-A neoprene-tired ball-bearing single carriers.

MODELS 341, 341R

Model 341 is identical to Model 340 track except that it is ENTIRELY STRAIGHT IN LAYOUT. Model 341-R is identical to Model 340 track except that it is ENTIRELY STRAIGHT IN LAYOUT and it uses Model 3501-A neoprene-tired ball-bearing single carriers.

MODELS 342, 342-R

Model 342 is for WALK-ALONG operation only and does not include any cords, end pulleys, or a floor pulley. It utilizes the same components as the Model 350 track with the exceptions of the pulleys.

Model 342-R is also for WALK-ALONG operation only and includes no cords, end pulleys, or a floor pulley. It utilizes the same components as the Model 342 track and includes Model 3501-A neoprene-tired ball-bearing.