

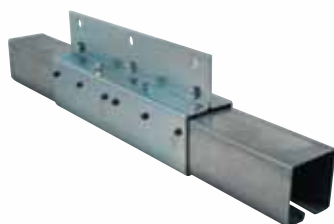


No. 2864A45 Dead End Pulley 45 Degree Angle

1-6 lbs.

Used when track systems need to fit in narrow ceiling pockets or when 2 track systems need to be placed closely side by side. Used with Model 2863A Live End Pulley. Painted steel construction with single 8" diameter ball-bearing nylon wheel. Can be used with any Model 280 track system.

10"W x 11"L



No. 2824 (BL) Suspended Splicing Clamp

1 pr. - 6 lbs. 6 oz.

Two piece 11 gauge steel clamp for joining track sections assuring proper alignment of track channels. Approximately 12" long x 2-3/4" wide x 5-1/2" high.

NOTE: For suspended tracks only.



No. 2824-A (BL) Ceiling Splicing Clamp

1 pr. - 2 lbs. 14 oz.

Two piece 11 gauge steel clamp for joining track sections assuring proper alignment of track channels.

Approximately: 12" long x 7/8" wide x 2-13/16" high.

NOTE: For ceiling mounted tracks only.



No. 28081D Hanging Clamp with Cord Support

Idler pulley device. Used to support and help prevent the cord or cable from sagging below the track sightline. Suggested spacing 6'. Pulley width approximately 4". Available for bi-part and one-way applications.



No. 2808 (BL) Hanging Clamp

1 pr. - 16 oz.

Recommended spacing: 7 ft. Steel, chain or cable suggested for track suspension. Adjustable to any location on the track. Pipe battens recommended for long and heavy curtain installations.



No. 2809 (BL) End Stop

1 - 6.4 oz.

Prevents carriers from moving beyond selected position in track.

Cannot be used with Rotodrapers®. Correct hardware supplied with Rotodrapers®.



No. 2807 (BL) Lap Clamp

1 - 1 lb. 8 oz.

For securing bi-parting tracks at the center overlap.

NOTE: For use with suspended track systems only.

Sold individually.



No. CPS-1 Center Pipe Support

1 pr - 15.2 oz.

To facilitate the clamping of steel track channel to a single pipe batten. The Center Pipe Support is placed at the overlap and the two lap clamps are used in the normal manner.

(Lap and pipe clamps sold separately.)



No. 2821 Pocket Mounting Bracket for Model 2800 Track

1 - 1 lb.

Steel offset bracket for mounting Model 2800 track to side of ceiling pocket. Projects track approximately 4 1/2" from side of pocket. Must be used with Model 2808 Hanging Clamp (not included). Plated steel construction.

4-1/2" L x 2" W