



No. 1100-A Channel

1' - 5 oz.

16 gauge extruded aluminum, clear anodized finish. Obtainable in unspliced lengths up to 20'. When recess mounting is desired, dovetail design on exterior of channel allows joint compound to seep into slot allowing a flush finish.

Approximately: 1-1/4" wide x 7/8" high.



No. 1131 Single Carrier

2 - 1 oz.

Carrier spacing: 6". Block provides "bumper-to-bumper" action, supported from 2 polyethylene wheels. Plated swivel for free, effortless and quiet curtain movement.

Carrier width: Approximately 1-3/16".



No. 1132 Master Carrier

1 - 2-1/4 oz.

Composed of a plated steel body with 4 solid polyethylene wheels. Extension arm provides 8" maximum overlap (4" in front of 4").

Carrier length: Approximately 7-1/2".



No. 1131-B Single Carrier

2 - 1 oz.

Carrier spacing: 6". Block, provides "bumper-to-bumper" action, supported from 2 nylon-tired ball-bearing wheels.

Carrier width: Approximately 1-3/16".

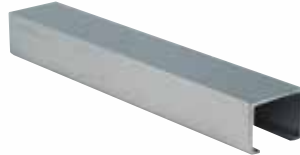


No. 1132-B Master Carrier

1 - 4 oz.

Similar to No. 1132 except equipped with 4" extension arm and 4 nylon-tired ball-bearing wheels. Also used on pinch-pleat installations. Provides 8" overlap. 4" in front of 4".

Carrier length: Approximately 7-1/2".



No. 1124-A Splicing Clamp

1 - 2 oz.

Anodized aluminum sleeve for joining track sections assuring proper alignment.

Approximately: 8" long x 1-3/8" wide x 1" high.



No. 1133 Live End Pulley

1 - 2 oz.

Equipped with 2 nylon ball-bearing wheels. Attaches to track end and also functions as an end stop.

Pulley bracket width: Approximately 1-1/4". Extends 1-1/2" beyond track end.



No. 1134 Dead End Pulley

1 - 1-1/2 oz.

Plated steel construction, equipped with 1 nylon-tired ball-bearing wheel.

Pulley bracket width: Approximately 1-1/4". Extends 1-1/2" beyond track end.



No. 1138 Hanging Clamp

1 pr. - 1 oz.

Plated steel construction, recommended spacing: 4'. Adjustable to any location. Chain or cable suggested for track suspension.

Approximately: 1-5/16" wide x 3/4" long x 1-7/8" high.



No. 2163 Projection Bracket

1 - 11 oz.

For use when track is to be mounted to side wall as opposed to overhead. Recommended spacing 2' on center along length of track. Projects center-line of track approximately 3-1/2" from side wall.

NOTE: CURTAIN FABRIC MAY RUB WALL WHEN STACKING

Approximately: 3-15/16" long x 3-11/16" high x 3/4" wide.